

WELCOME TO



**THE NYMPHAEUM
ROOM**

How much light there is
in this space!

Do you know that, a long time
ago, this space was not an indoor
room? It was an open courtyard!
Thanks to the big window, we can
still imagine what it looked like.

Step closer and take a
good look at what is hiding
behind the glass:
can you see the
Nymphaeum Fountain
and the two statues
on each side?





The fountain is turned on only
on special occasions.
But if you close your eyes
for a moment... listen...
**can you hear the water
splashing?**

The water flows from the little cave
in the center of the nymphaeum
and down into the basin
below, like a river rushing from
the top of a mountain, today like
long time ago.

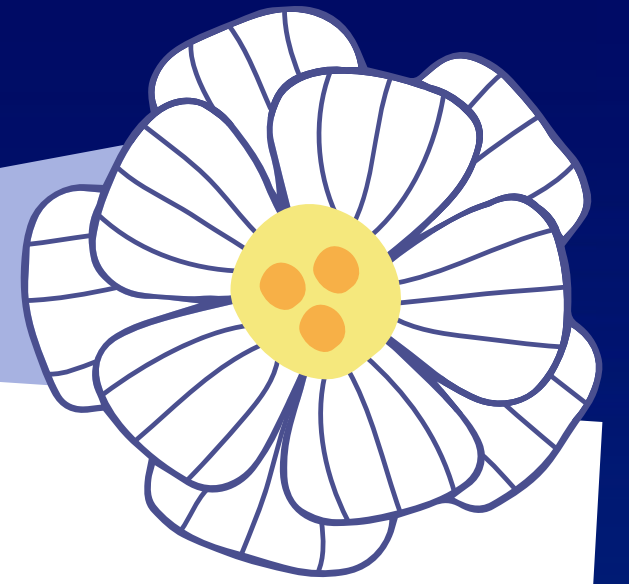


But what is a nymphaeum?

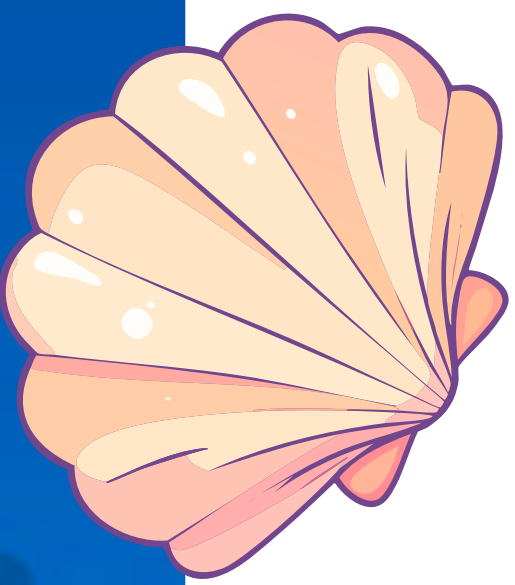
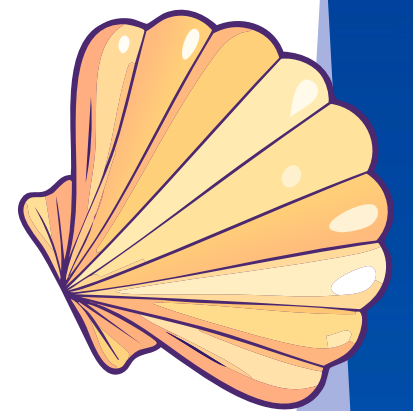
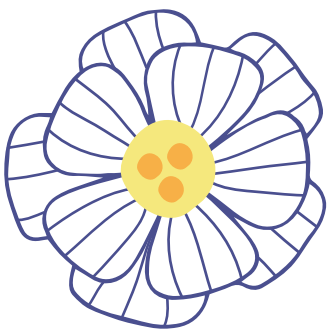
Long ago, nymphaea were special sacred places dedicated to the nymphs, creatures of nature who lived in forests and rivers.

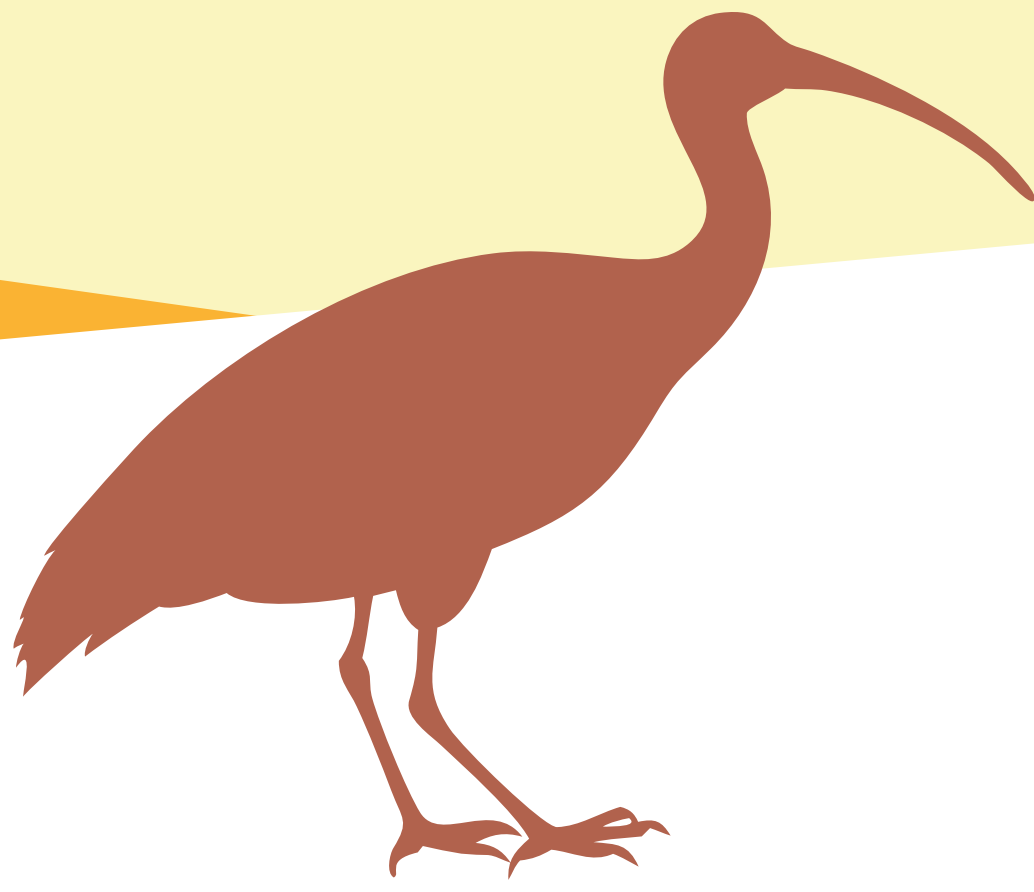
Over the years, a nymphaeum turned into special fountain, just like the one you are looking at now!





Take a good look at the walls:
they are completely covered with
shells and little stones that,
just like pieces of a puzzle,
create flowers, waves,
and geometric shapes.



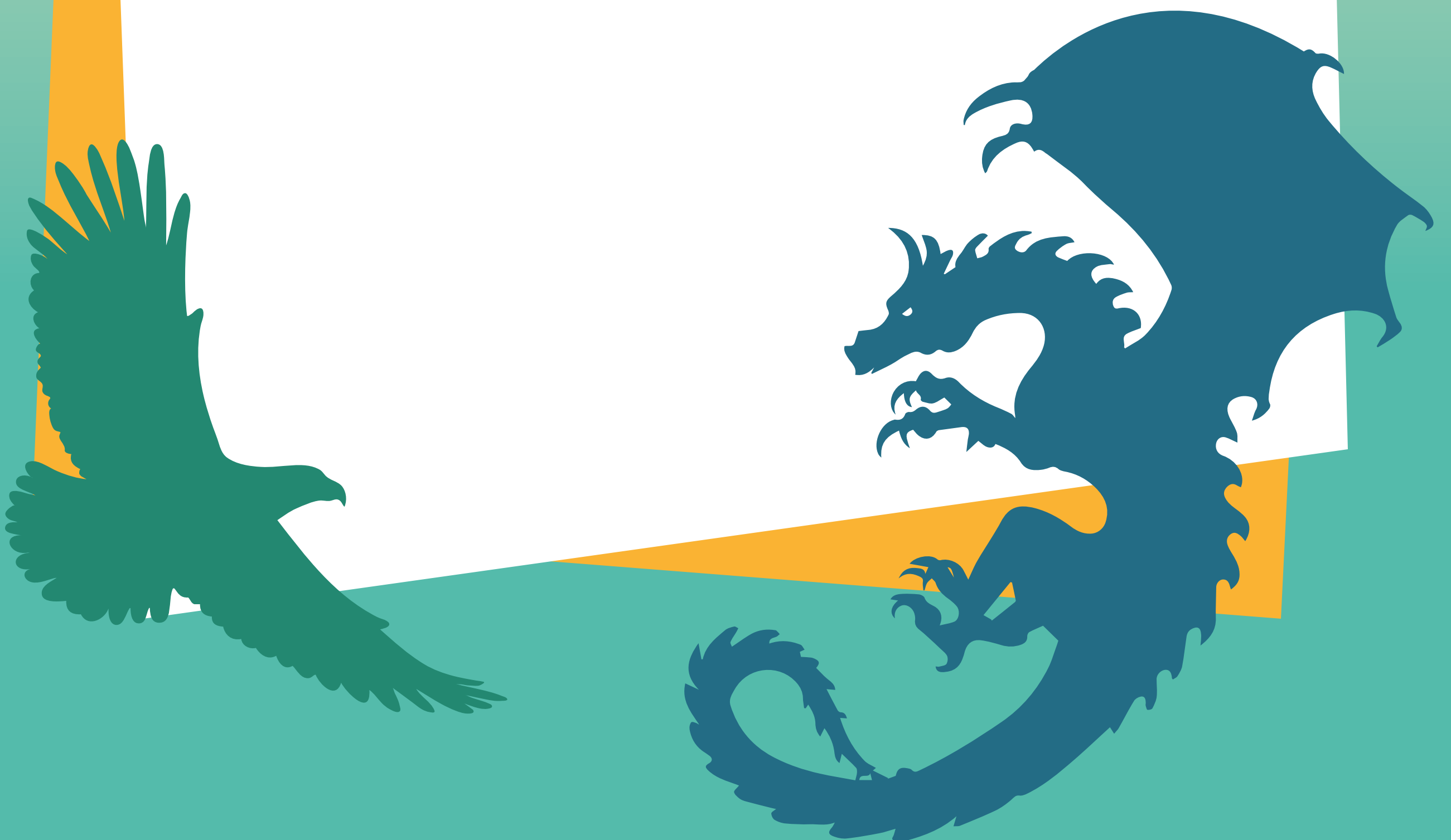


If you look closely, you might spot
some hidden animals...
can you find them?

There are **ibises**, birds that
once lived in Egypt along
the banks of the Nile River,
and there are **dragons**
and **eagles**.

These two strong and brave
animals were the symbols of
the Borghese family, who once
lived in this house.

If you take a walk in the park,
you might discover more!



Have you noticed the two statues on the side of the fountain?

They represent two ancient Romans wearing the **toga**, the elegant garment used in ancient Rome, full of deep folds that followed the movements of the body.

In their hands, they hold a scroll, a long rolled-up sheet that contained important documents, such as laws or valuable writings.

The statue on the left has a small box next to its foot, called capsa, which was used to store these scrolls. The other statue is leaning against a small column.

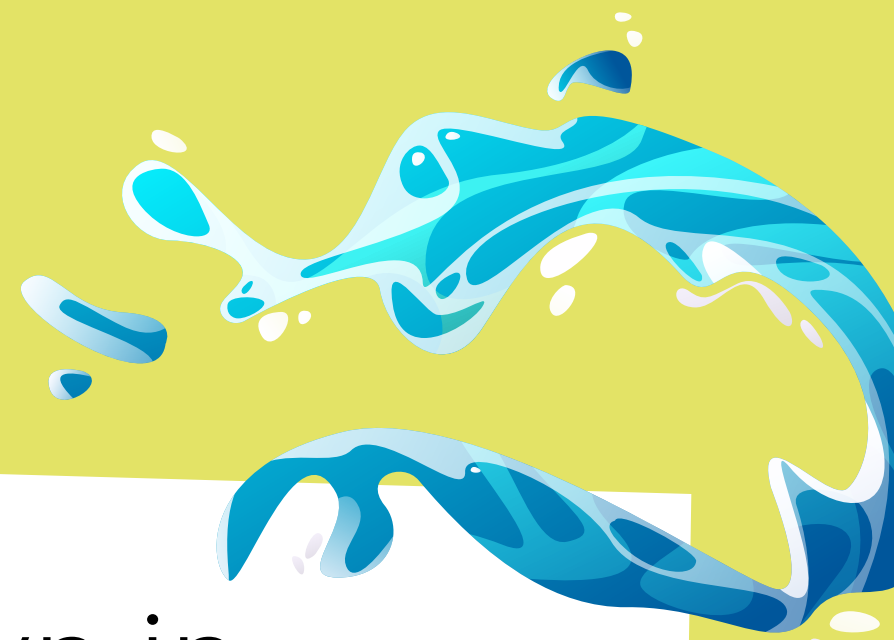
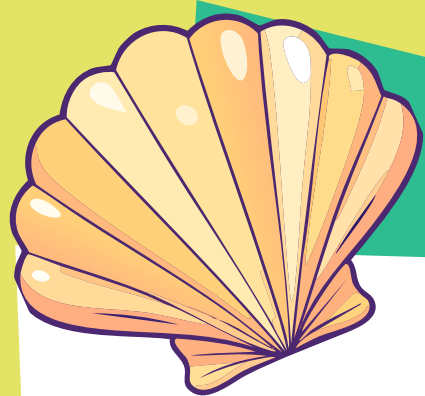




And you? Where do you keep
your drawings?
Have you ever rolled them up
to carry them more easily?

Did you look closely at the
nymphaeum fountain and
the two statues?

**Let's see how much
you remember!**



Which animals are shown in the nymphaeum fountain?

.....

What materials were used to decorate the walls of the nymphaeum?

.....

One of the statues has a small cylindrical box next to it, what is its name?

.....

What object do both statues hold in their hands?

.....

Do you want to discover even more?
Ask someone with you to scan the **QR code** next to the labels, and **you will find lots of hidden curiosities!**

